



電子型錄下載



漢科系統科技股份有限公司

*Wholetech System Hitech Limited*



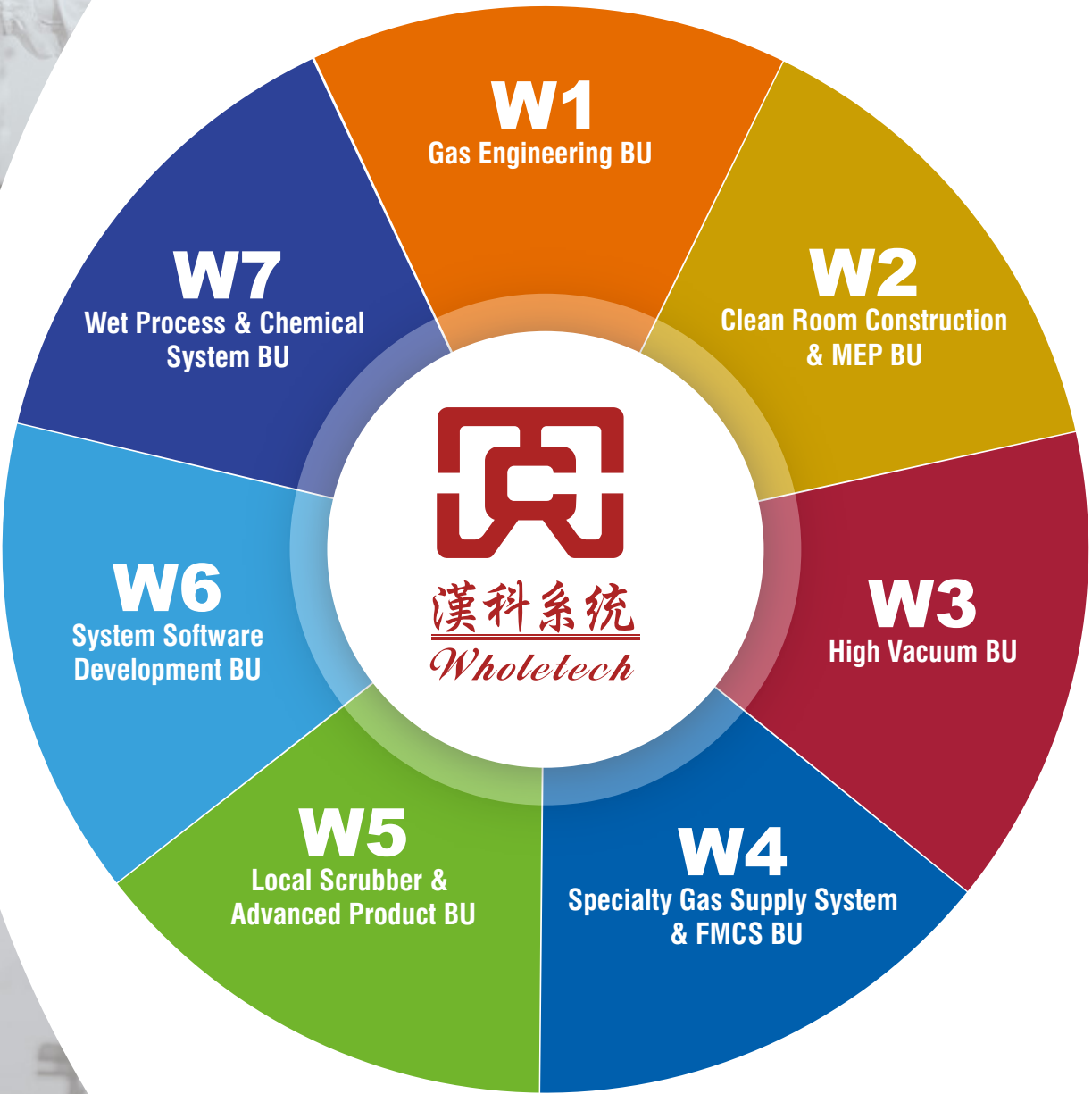


# 漢科系統科技股份有限公司

*Wholetech System Hitech Limited*

- 新竹總部：** 308-005 新竹縣寶山鄉環北路333號  
No. 333, Huanbei Rd., Baoshan Township, Hsinchu County, 308-005, Taiwan (R.O.C.)  
TEL: +886-3-522-8823 FAX: +886-3-521-0028  
Website: www.wholetech.com.tw
- 新竹公司：** 300-074 新竹市高峰路487號  
No.487, Gao Fong Rd., Hsinchu City, 300-074, Taiwan (R.O.C.)  
TEL : +886-3-522-8823 FAX : +886-3-562-0437 / +886-3-522-0028
- 林口公司：** 333-004 桃園市龜山區文化七路182巷51.53號  
No. 51, Ln. 182, Wenhua 7th Rd., Guishan Dist., Taoyuan City 333-004, Taiwan (R.O.C.)  
TEL : +886-3-397-5796 FAX : +886-3-397-5798
- 台中工廠：** 433-101 台中市沙鹿區忠貞路309號  
No. 309, Zhongzhen Rd., Shalu Dist., Taichung City 433-101, Taiwan (R.O.C.)  
TEL : +886-4-2615-3220 FAX : +886-4-2615-4485
- 台南工廠：** 745-001 台南市安定區安定里42之12號  
No. 42-12, Anding, Anding Dist., Tainan City 745-001, Taiwan (R.O.C.)  
TEL : +886-6-597-5255 FAX : +886-6-597-6631
- 高雄工廠：** 815-005 高雄市大社區旗楠路92號  
No. 92, Qinan Road, Dashe Dist., Kaohsiung City 815-005, Taiwan (R.O.C.)  
TEL : +886-7-353-6392 FAX : +886-7-353-9726

- 美 國** **Wholetech System Hitech USA. Inc.**  
2868 W. Deer Valley Drive, Phoenix, AZ 85027  
TEL: +1-623-248-9952 FAX: +1-623-328-9136
- 德 國** **Wholetech GmbH**  
Leeraue 59, 01109 Dresden, Germany  
TEL: +49-1517-2009759
- 日 本** **WTC日本株式会社 Wholetech System Hitech (Japan) Co.,Ltd.**  
熊本県菊池郡大津町大字室1352番地7  
TEL: +81-96-285-5215
- 上 海** **汉科系统科技(上海)有限公司 Wholetech System Hitech (Shanghai) Co.,Ltd.**  
**汉群贸易(上海)有限公司 Wholetech Group (Shanghai) Trading Co.,Ltd.**  
上海普陀区光复西路2899弄瀛华国际广场2号(D)栋306室  
Room 306, Building 2, Lane 2899, Yinghua International Plaza,  
West Guangfu Road, Putuo District, Shanghai  
TEL: +86-21-5080-2106 FAX: +86-21-5080-2107
- 新 加 坡** **汉科系统科技(新加坡)有限公司 Wholetech System Hitech (S) Pte Ltd.**  
7 Gambas Crescent #01-10 ARK@Gambas Singapore 757087  
TEL: +65-6251-9722 FAX: +65-6251-9787  
Website: www.wholetech.com.sg



# Company Profile

## 全方位系統整合 推動高科技產業全面升級

漢科集團於：台灣、中國、新加坡、日本、美國、及德國  
皆以同樣的規模，七個事業部運作。

漢科系統科技創立於公元1990年，經營團隊多年來的努力已成為全方位系統整合的領導廠商之一，漢科團隊的專業技術能力和豐富的工程實務經驗，成立了全方位的系統整合服務平台，現有七大專業事業部門：

- W1** 氣體／特殊管路工程事業部
- W2** 無塵室 & 機電統包事業部
- W3** 高真空系統事業部
- W4** 特氣供應 & 監控系統整合事業部
- W5** 尾氣除害設備／先進產品事業部
- W6** 系統軟體研發事業部
- W7** 濕製程設備&化學系統事業部

我們獲得的國際品質管理的認證有ISO 9001，SEMI S2，和 ISO45001，及國家人才發展品質管理系統(TTQS)。

公司內部嚴格的控管生產及施工步驟，如工安管制，品質管理，採購控管、專案進度控制、現場協調、預算控制、材料查驗…等。

在漢科系統科技，我們提供的方案與服務不但有安全與品質的保證及符合相關法律上的規定，而且持續追求客戶的滿意，並以提升客戶的競爭力為公司追求的目標。

## Whole System Integration Pursue High-tech Industry Upgrading

Wholetech Group operates with seven business unit of the same scale in Taiwan, China, Singapore, Japan, the United States, and Germany.

Incorporated in 1990, Wholetech System Hitech Limited has grown to become a leader in total solutions provider for high-tech companies.

With the staff that has the technical skills and practical experiences, Wholetech specializes the following areas of service:

- W1** Gas Engineering BU
- W2** Clean Room Construction & MEP (Mechanical, Electrical, and Process System) BU
- W3** High Vacuum BU
- W4** Specialty Gas Supply System & FMCS BU
- W5** Local Scrubber & Advanced Product BU
- W6** System Software Development BU
- W7** Wet Process & Chemical System BU

Wholetech is accredited through the internationally recognized quality assurance standards of ISO 9001, SEMI S2, ISO45001 and Talent Quality-management System. Our in-house ISO procedures cover key manufacturing processes such as procurement control, project schedule control, onsite coordination, budget control, and materials in/out inspection.

At Wholetech, we deliver on our promise: turnkey solutions with code compliances and quality guarantee. Moreover, we continuously strive for our clients' satisfaction and uncompromising integrity.

德國 Germany  
蘇州 Suzhou  
上海 Shanghai  
廈門 Xiamen  
日本 Japan  
美國 U.S.A  
新加坡 Singapore

台灣 Taiwan

• 林口 Linkou  
• 新竹 Hsinchu  
(總公司 Head Office)  
• 台中 Taichung

• 台南 Tainan  
• 高雄 Kaohsiung

# Business Philosophy

## 『誠信、守法；安全、品質；創新、服務』

漢科系統科技多年來即秉持『誠信、守法；安全、品質；創新、服務』經營理念，以百分百的行動力，嚴格執行客戶所交付的每一項任務，同時結合專業的工程管理能力和指揮系統，發揮高效率的服務品質，正是我們對所有客戶最好的承諾。

### “Integrity and Compliance”

### “Safety and Quality”

### “Innovation and Service”

Wholetech System Hitech Limited (Wholetech) adheres to the business philosophy of “Integrity and Compliance”, “Safety and Quality” and “Innovation and Service” over the years.

We strictly carry out every assignment with highly motivated action adhering to the concept of integrity and compliance with laws. Guaranteeing safety and quality assurance through professional engineering management, as well as providing high-efficiency service under the operational command structure.

Therefore, we are committed to delivering the best service for valued customers.



- 誠信守法是公司永續經營的基石
- 安全及品質是品牌屹立不搖的保證
- 創新及服務的精神是漢科人不斷前進的熱情

# Milestone

## 2023-2026

- 德國子公司成立 (2024)  
Established a subsidiary in Germany
- 美國子公司成立 (2023)  
Established a subsidiary in the US
- 日本子公司成立 (2023)  
Established a subsidiary in Japan
- 新加坡子公司增資  
Implemented the capital increase of Singapore subsidiary
- 永續經營  
Sustainable development

## 2017-2022

- 濕製程供應設備研發製造  
Established wet process & chemical system development & manufacturing capabilities
- 智慧工廠 & IoT 智能系統研發  
Strengthening research & development in IoT - smart facility management

## 2011-2016

- 設備自主研發製造  
Established gas system & local scrubber development & manufacturing capabilities
- Local scrubber 安裝半導體產業客戶超過千台
- GC VMB/VMP 安裝UMC 集團超過千台

## 2006-2010

- 正式掛牌上櫃(3402)  
Officially listed in Taiwan Stock Exchange
- 擴大營業規模  
Expansion of business scale
- 客戶導向 · 專業永續  
Customer-orientated professional service

## 2000-2005

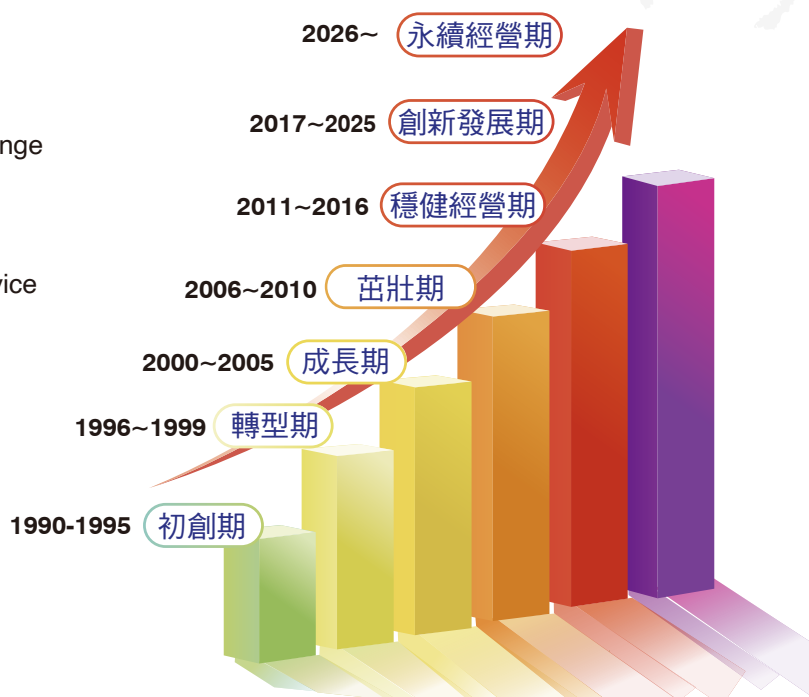
- 通過ISO9001、SEMI S2、OHSAS18001國際認證  
Acquired ISO9001, SEMI S2, OHSAS18001 International certification
- 上海子公司成立 (2001)  
Established a subsidiary in Shanghai
- 公開發行 · 邁向國際化  
Internationalization
- 發展機電、無塵室統包  
Mechanical, Electrical and Clean Room Construction. Total Solution

## 1996-1999

- 更名為漢科系統科技，朝向系統工程發展  
Renamed to Wholetech System Hitech Limited
- 新加坡子公司成立 (1996)  
Established a subsidiary in Singapore
- 一級承攬商，園區各大廠直接邀標承攬，取得半導體產業客戶、聯電、華邦、旺宏、南亞等大廠主承攬商資格  
Became qualified main contractor for Semiconductor Industry Customers, UMC, Winbond, MXIC and Nanya
- 良好的信用，博得客戶信賴  
Good credit. Reliable partner

## 1990-1995

- 原名為漢科工程股份有限公司  
Originally "Wholetech Engineering Corporation"
- 專注特殊氣體管路工程  
Major in Piping project



# Certification

## 國際認證



ISO 9001  
BSI/英國標準協會台灣分公司  
證號：FM 512693



ISO45001  
BSI/英國標準協會台灣分公司  
證號：OHS 505808



Local Scrubber Semi S2認證  
工業技術研究院  
證號：100SEMI10281



Gas Cabinet Semi S2認證  
TUV/台灣德國萊因技術監護顧問公司  
證號：WA 50289776 01



SEMI F47  
Certificate of Compliance  
證號：107R1333



Chemical Charge & Supply  
Unit SEMI S2認證  
財團法人精密機械研究發展中心  
Certificate of Compliance



# Certification

## 國際認證



Gas Cabinet 防爆電氣設備型式  
檢定合格證明 工業技術研究院  
證號：(ISTI)2017第07-00039號  
Explosion proof certificate for  
electrical equipment design



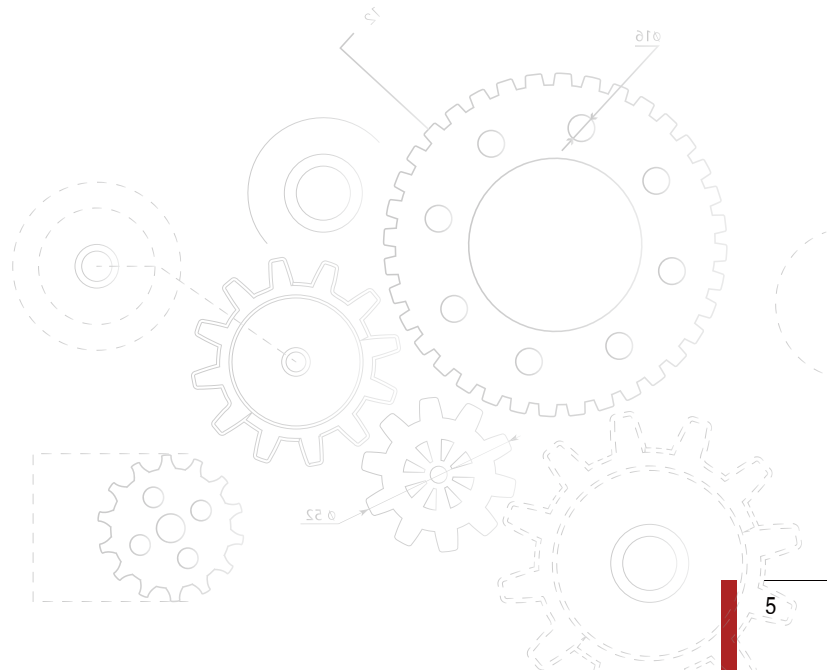
化學品供應防爆電氣設備型式  
檢定合格證明 產業安全技術中心  
證號：(ISTI)2024第07-00026號



Gas Cabinet CE認證  
TUV/台灣德國萊因  
技術監護顧問公司  
證號：AN 50289777 0001



Local Scrubber CE 認證  
Safenet Limited  
型號：WTC-1000  
證號：6093220716



# Customer Awards & Recognitions

## ■ 客戶肯定

### 2025



114年度(2025年) 總計 33張獎狀 1面獎座

In 2025, we received a total of 33 certificates of recognition and one trophy awarded by our customers.

### 2024



113年度(2024年) 總計 34張獎狀 1面獎座

In 2024, we received a total of 34 certificates of recognition and one trophy awarded by our customers.

### 2023



112年度(2023年) 總計 13張獎狀 2面獎座

In 2023, we received a total of 13 certificates of recognition and 2 trophies awarded by our customers.

# Customer Awards & Recognitions

## ■ 客戶肯定

### 2022



111年度(2022年) 總計 11張獎狀 2面獎座

In 2022, we received a total of 11 certificates of recognition and 2 trophies awarded by our customers.

### 2021



110年度(2021年) 總計 14張獎狀 3面獎座

In 2021, we received a total of 14 certificates of recognition and 3 trophies awarded by our customers.

### 2020



109年度(2020年) 總計 9張獎狀 3面獎座

In 2020, we received a total of 9 certificates of recognition and 3 trophies awarded by our customers.

## Bulk Gas / Special Gas piping system

全球各地廠房新建工程與設備產品，組裝、測試、檢驗與售後服務。

- 二次配工程設計、規劃、測試與施工。
- 氣體主系統規劃設計、測試、施工、維護。
- 售後服務、教育訓練，專案規劃之執行與客訴處理。

Responsible for Fab and engineering products required for the production, assembly, testing, inspection and after-sales service all around the world.

- Hook up design, planning, testing, and engineering.
- Gas main system plan development, testing, engineering and maintenance of all products and support acceptance.
- After sales service, training service, the handling of the project and acceptance, handling of customer complaints.



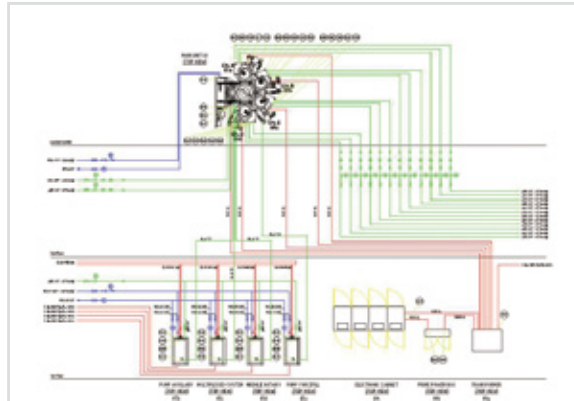
大宗氣體系統工程  
Bulk Gas System



特殊氣體系統工程  
Specialty Gas Supply System



氣體二次配工程  
Gas Hook-up System



二次配系統統包工程  
Hookup Turnkey & Consultant

### Clean Room & MEP System

W2提供半導體、面板、光電、太陽能、LED、生技製藥、醫院及辦公室等的無塵室、空調與機電廠務系統的整體規劃、設計、節能、施工乃至試車運轉與維修保養等服務項目，並提供BIM、無塵室設計、建廠可行性分析、預算評估、工期掌握與設施選擇建議，以協助業主符合功能上的需求。並持續提供節能改善的有效方案以符合客戶各項建廠要求及系統功能提升。

W2 provides integrated cleanroom, HVAC, and MEP facility solutions for industries including semiconductors, FPD, optoelectronics, solar, LED, biotechnology, pharmaceuticals, hospitals, and offices. Services cover planning, design, energy optimization, construction, commissioning, and maintenance.

We also deliver BIM, cleanroom design, feasibility studies, cost estimation, schedule control, and facility selection to support clients' functional requirements, while continuously offering energy-efficient solutions to enhance system performance and meet project demands.



無塵室系統工程  
Clean Room System



無塵室系統工程  
Clean Room System



機電系統工程  
MEP System



機電系統工程  
MEP System

## Pumping Line/Exhaust/Vacuum Valve/Spare Parts System

- 半導體廠製程用真空管路系統規劃/設計/製造/安裝/測試
  - 半導體廠製程用真空管路及相關配件/閥件設計/研發/製造/安裝
  - 真空管路及閥件、零組件維修/潔淨/技術諮詢
- 
- Pumping & Exhaust Piping System design, construction, and testing.
  - High Vacuum Fitting & Valve & Parts design, development, manufacturing, and installation.
  - High Vacuum Fitting & Valve & Parts repair, clean, and consulting services.



真空排氣系統工程  
Vacuum Piping System



真空排氣系統工程  
Vacuum Piping System



真空閥件研發製造  
Vacuum Ball Valve Design & Manufacture



真空管路相關配件  
Vacuum System Parts & Fitting

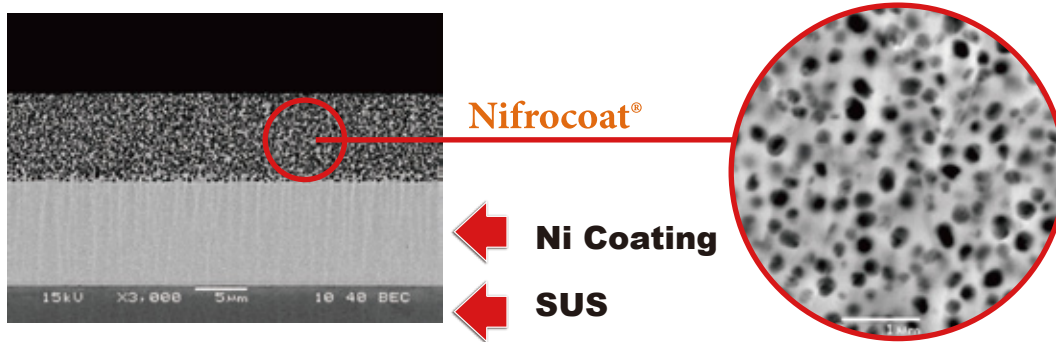
# Nifrocoat®

**Nifrocoat®**是由優化的特殊塗層技術，將鎳合金以複合電鍍技術與氟樹脂形成多層共聚合物結構的特殊塗層。克服傳統**Teflon Coating**針孔缺陷、剝落等問題。

由於半導體製程氣體使用往往會伴隨著粉塵的產生，造成管內部阻塞；**Nifrocoat®**可有效降低粉塵吸附，延長管件的維護保養的週期；並可節省管路加熱的耗電。

Nifrocoat® is a multilayer copolymer coating, a combination of nickel-phosphorus alloy and fluorinated resin, through a special optimized coating technique. This application greatly reduces pinholes and edge defects issue presented in conventional PTFE coating or plating method.

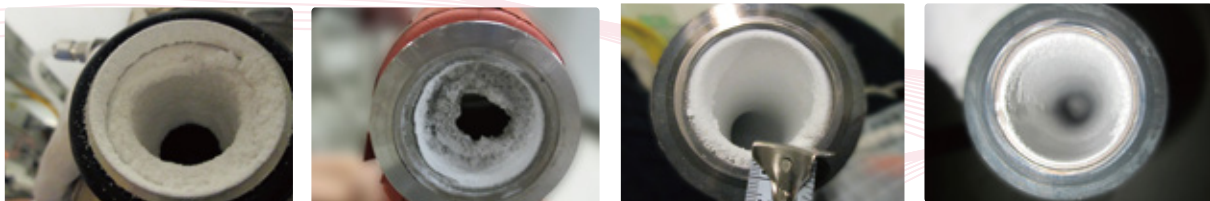
Semiconductor manufacturing is often accompanied with dust generation during gas processes, and hence creating internal piping blockage. Nifrocoat® can effectively reduce dust accumulation along the piping wall and extend the maintenance cycle of the pipe, in the meantime reduce the needs for power consumption of the pipe heating.



優點：	Advantage	應用範圍：	Application
耐腐蝕	Corrosive resistance	真空管	Vacuum Line
抗沾黏	Prevent byproduct adhesion	真空幫浦	Vacuum pump
耐磨耗	Abrasion resistance	幫浦葉片	Pump blades
抗靜電蓄積	Anti-static charging	尾氣處理設備	Local Scrubber
膜層均勻性好	Good coating uniformity		
可承受較高工作溫度	High heat resistance		
高硬度	Excellent hardness strength		



即使不用加熱帶，粉末附著量令人驚訝地減少！= 加熱用電成本為零！



**Before** (需加熱帶)

**After** (僅Nifrocoat®)

### Special gas equipment and monitoring system

## BSGS、氣瓶櫃、氣瓶架、VMB/P 設計與銷售 GIS / HPM / FMCS 監控硬軟體規劃設計

- Responsible for gas supply equipment design, manufacture and sale
- BSGS, Gas Cabinet, Gas Rack, VMB/VMP
- Customized equipment design
- PLC system architecture design and programming
- SCADA system design and software development
- Gas supply equipment R&D

### 監控系統整合

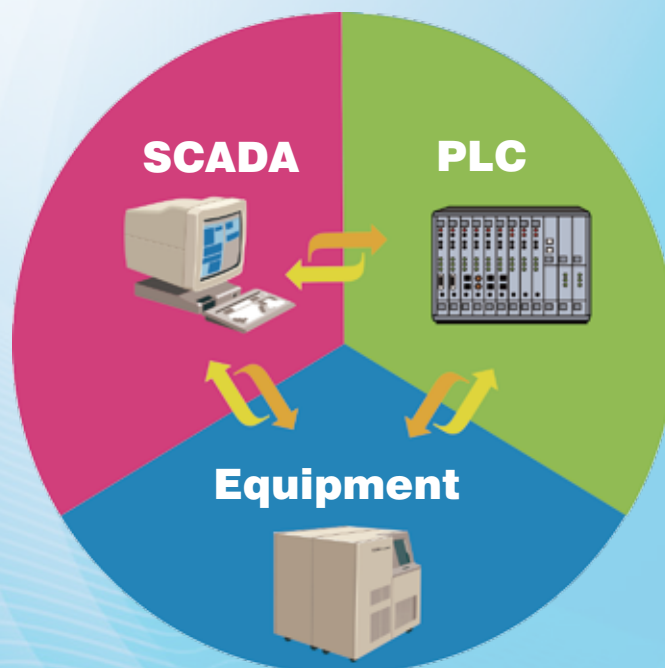
## FMCS (Facility Management & Control System)

服務項目：Service:

- 氣體供應監控系統
- 化學供應監控系統
- 純水供應監控系統
- 電力供應監控系統
- 廠務監控系統
- 各式PLC盤、電力盤、監控盤之設計  
規劃製作
- Gas Supply Monitoring System
- Chemical Supply Monitoring System
- Pure Water Supply Monitoring System
- Power Supply Monitoring System
- Facility Supply Monitoring System
- Design, planning and manufacturing of various PLC  
panels, power control panels and monitoring panels

藉由整合各種廠牌圖控軟體、PLC及HMI。將客戶端設備及儀錶資訊進行遠端監視、操作及安全連鎖控制。資料運算及分析，報表語音警報。建立一套以確保廠務工作環境安全為前提的監控系統。

SCADA integrates various brands of control software, PLCs and HMIs to enable real-time monitoring, operation, and management control of various client devices and instruments. It provides data visualization and analysis, reports and voice alarms. This establishes a monitoring system designed to ensure a safe working environment in the factory .



## Bulk Special Gas System (BSGS) Gas Cabinet & Rack

### 特點：

- 優秀的設計團隊，滿足客戶的需求
- 安全，易於操作和維護
- 標配手動緊急強制供氣開關
- BSGS可以設計在高流量或超高流量的運用

### Features:

- Excellent design team to satisfy your requests
- Safer and easier to operate and maintain
- Simple design to operate emergency gas supply
- The system can be configured for high flow or ultra-high flow applications

### Function:

- Auto Pre-Purge
- Auto Post-Purge
- Auto Process Gas Purge
- Auto Shut-Down
- Data Output
- Leak Detect And Warning
- Vacuum Generator  
Function Test
- Gas Weight Warning
- PT Auto Adjustment
- Manual Operation
- Air Valve Motion Detect
- Over Flow Detect
- Exist Gas Vent
- Access Windows
- Door Self-Latching
- Cylinder Ramp

### Option safety devices:

- UV/IR or IR2
- Shut boy
- Auto Guard
- Gas Leak Detector
- Auto Damper
- Door Switch



### GC/RACK Code List

WT	C	-	3	FA	-	G	-	SiH4
↓	↓		↓	↓		↓		↓
Wholetech	Product		Cylinder	Operation		Gas		Gas Name
	GC:C Rack:R		1 2 3 4...	Full-Auto:FA Semi-Auto:SA Full-Manual:FM		Gases:G Liquid:L		



## Valve Manifold Box / Panel (VMB/P)

### 特點：

- 依據客戶使用需求，客製化設計，滿足客戶需求。
- 先進控制迴路設計，各類安全警報設置，提供穩定且安全之供氣條件。
- 專業之設計團隊，提供高壓供應或高流量等機型，滿足客戶製程需求。
- 所有產品經品質驗證，保證產品零異常。
- 符合SEMI S2認證，並提供TS防爆認證機型。

### Features:

- Customized design based on customer needs.
- Advanced control loop design, safety device settings, provide stable and safe gas supply conditions.
- The professional design team, provides High-Pressure or High-Flow models to meet customer process needs.
- All products have been quality verified to ensure zero abnormalities.
- Follow SEMI S2 and TS explosion-proof certified models.

### Function:

- Individual Line Control ON/OFF
- Double-Decked Control Panel
- Vacuum Generator Function
- Pressure Transducer Data Display



## 高科技半導體產業實績客戶

### 國內



### 海外



### VMB&T-BOX 閥箱&分流箱

**1,000+**

Units Delivered  
台以上 (近三年累計)  
over the past 3 years  
(2022-2024)

### BSGS & GC 大宗氣體系統 & 氣瓶櫃

**200+**

Systems Delivered  
台以上 (近三年累計)  
over the past 3 years  
(2022-2024)

### Local Scrubber

W5以提供市場上最新及最具競爭力的產品，並提供最好的服務，替顧客量身打造最佳的方案為宗旨。

目前主要生產之Local Scrubber採用高品質之控制元件，以提供更耐用的使用壽命。產品設計中更加入了省電與省水模式，達到節能減碳的效果。本產品也通過了SEMI S2認證，確保品質符合國際規範與要求。

W5's mission is to provide the market's latest and most competitive products, offer the best service, and create tailored solutions for its customers.

The Local Scrubbers currently produced utilize high-quality control components to ensure a longer service life. The product design incorporates power-saving and water-saving modes to achieve energy efficiency and carbon reduction. Additionally, this product has passed SEMI S2 certification, ensuring that its quality complies with international standards and requirements.

<b>WTC-100</b>	水洗式	Wet Scrubber
<b>WTC-200</b>	電熱-水洗式	Thermal-Wet Scrubber
<b>WTC-300 A-2</b>	水洗-電熱-水洗式	Wet-Thermal-Wet Scrubber
<b>WTC-300 N</b>	水洗-高溫電熱-水洗式	Wet-High Thermal-Wet Scrubber
<b>WTC-500</b>	乾式-吸附式	Dry Absorb Scrubber
<b>WTC-600</b>	電漿-水洗式	Plasma-Wet Scrubber
<b>WTC-700</b>	高效感應加熱式	Wet-IH-Wet Scrubber
<b>WTC-800</b>	燃燒-水洗式	Burn Wet Scrubber
<b>WTC-1000</b>	大型水洗式	Wet Scrubber
<b>WTC-2000</b>	超重力水洗式	HiGee Scrubber



## WTC-100 Wet Scrubber

Model	WTC-100
Utility	220V, 50/60Hz, 3φ4W, 16A
Capacity	400LPM
Dimension	1200(W)*850(D)*1850(H) mm

### WTC-100 Application & DRE:

NH<sub>3</sub>>99% BCl>99% HCl>99% Cl<sub>2</sub>>99%(+NaOH) HBr>99%

#### Advantage:

- Multi-level washing design. Efficiency gas processing.
- Venturi's design. High powder-capture efficiency.
- Comprehensive safety consideration.
- Controlled by PLC with HMI.
- Water saving function. Low cost & lowest COO (Cost Of Operation).
- Flexible customer design service.
- 100% parts stock support.
- Local direct technical support.

#### 優勢：

- 多段式洗滌設計,氣體處理效益佳
- 文式洗滌設計,氣體捕捉效率高
- 周延的安全考量,人機介面操作
- 省水模式,低操作成本
- 提供客製化服務
- 零件供應充足
- 到廠技術服務

#### Option:

- Chemical Dosing System
- CMS (Central Monitoring System)
- Gas Detector



#### 附加選項：

- 自動加藥設計
- 中央監控系統
- 氣體偵測器

## WTC-200 Thermal-Wet Scrubber

Model	WTC-200
Utility	220V, 50/60Hz, 3 φ 4W, 75A
Capacity	600LPM
Working Temp.	600°C
Dimension	900(W)*900(D)*1850(H) mm

### WTC-200 Application & DRE:

GeH<sub>4</sub>>99% NH<sub>3</sub>>99% HCl>99% PH<sub>3</sub>>99% SiCl<sub>2</sub>H<sub>2</sub>>99%  
 SiH<sub>4</sub>>99% WF<sub>6</sub>>99% H<sub>2</sub>>99% ClF<sub>3</sub>>99%

#### Advantage:

- Comprehensive safety consideration. User Friendly Interface.
- High powder-capture efficiency
- Water saving function. Low cost & lowest COO (Cost of Operation)
- 100% parts stock support
- Local direct technical support .

#### 優勢：

- 周延的安全考量操作容易
- 粉塵捕捉效率高
- 省水模式,低操作成本
- 零件供應充足
- 到廠技術服務

#### Option:

- Chemical Dosing System
- CMS (Central Monitoring System)
- Gas Detector

#### 附加選項：

- 自動加藥設計
- 中央監控系統
- 氣體偵測器



## WTC-300 A-2 Wet-Thermal-Wet Scrubber

Model	WTC-300 A-2
Utility	220V, 50/60Hz, 3 φ 4W, 63A
Capacity	400LPM
Working Temp.	800°C
Dimension	1000(W)*1100(D)*1850(H) mm

### WTC-300 A-2 Application & DRE:

NF3 >95%	NH3 >99%	SiH4 >99%	SiCl2H2 >99%	TAS >99%
TMA >99%	TSA >99%	F2 >99%	B2H6 >99%	SiF4 >99%

#### Advantage:

- Pre Wet Scrubber Design – High Removal Efficiency
- Anti-corrosion Material Design – Longer Operation Life
- Comprehensive safety consideration. User Friendly Interface.
- Low cost & lowest COO (Cost of Operation)
- Flexible customer design service
- 100% parts stock support
- Local technical support directly.

#### Option:

- CMS (Central Monitoring System)
- Scraper
- Gas Detector

#### 優勢:

- 前段水洗, 增加除去效率
- 抗腐蝕材質, 延長使用壽命
- 周延的安全考量, 操作容易
- 低操作成本
- 客製化服務
- 零件供應充足
- 到廠技術服務

#### 附加選項:

- 中央監控系統
- 腔體刮刀
- 氣體偵測器



## WTC-300N Wet-High Thermal-Wet Scrubber

Model	WTC-300N
Utility	220V, 60Hz, 3 φ 4W, 75A
Capacity	300LPM
Working Temp.	740°C~1100°C
Dimension	1000(W)*1100(D)*2160(H) mm

### WTC-300 Application & DRE:

NF3 >95%	SiH4 >99%	SiF4 >99%	HF >99%	H2 >99%
NH3 >99%	B2H6 >99%	F2 >99%	O3 >99%	Alexa >95%
TSA >99%	TMA >95%	TMS >99%	TDMAT >95%	PDMAT >95%
TEOS >95%	TEMAZ >95%	ASM24 >95%	NO2 >90%	

Proposal Process : Semiconductor Thin Film 、 Etching 、 Diffusion

#### Advantage:

- Pre wet scrubber design, High Removal Efficiency
- Pre Heating Design – High Destruction Efficiency
- Anti-corrosion material design, Longer product life expectancy
- Scraper for Reaction Chamber

#### Option:

- Inlet Anti-Backfire Device
- Gas Detector

#### 優勢:

- 前段水洗, 增加除去效率
- 抗腐蝕材質, 延長使用壽命
- 周延的安全考量, 操作容易
- 低操作成本
- 客製化服務
- 零件供應充足

#### 附加選項:

- 中央監控系統
- 腔體刮刀
- 氣體偵測器



## WTC-500 Dry Absorb Scrubber

Model	WTC-500
Utility	220V,50/60Hz,6A
Capacity	150LPM
Working Temp.	Room Temp.
Dimension W*D*H	1200(W)*620(D)*1900(H) mm

### WTC-500 Application & DRE:

PH3 >99%	SiH4 >99%	NH3 >99%	BF3 >99%
AsH3 >99%	B2H6 >99%	HBr >99%	HCL >99%

#### Advantage:

- Interlock by PLC with HMI
- Manual Valve with Position Check Design
- Gas Detector with Early Warning System
- Gas Detector with auto switch to detecting tank and cabinet
- Blower with Auto Pressure Control
- Absorbent tank Temperature sensor alarm with N2 purge.
- Smoke Detector
- Provide a variety of communication format links - CMS ( Central Monitoring System )

#### 優勢：

- 高處理效率
- 操作容易
- 低操作成本
- 客製化服務

#### 附加選項：

- 中央監控系統



## WTC-600 Plasma-Wet Scrubber

Model	WTC-600
Capacity	400LPM
Working Temp.	>1400°C
Utility	220V,50/60Hz,100A
Dimension	950(W) x 950 (D) x 2100(H) mm

### WTC-600 Application

CF4 >95%	NF3 >95%	B2H6>99%	NH3 >99%	PH3 >99%
SiH4>99%	TEOS>99%	WF6>99%	HCl>99%	HF>99%
GeH4>99%	SiCl2H2>99%	N2O>95%	SF6>95%	

Proposed Process : Semiconductor Etching 、 Thin Film 、 Diffusion

#### Advantage:

- Advantage:
- Plasma wet scrubber design , High Removal Efficiency
- Anti-corrosion material design, Longer product life expectancy
- Inlet Auto By-pass System
- Blower with Inlet APC

#### Option:

- Inlet Anti-Backfire Device
- Chemical Dosing with pH Control

#### 優勢：

- 周延的安全考量,操作容易
- 高處理效率
- 低操作成本
- 零件供應充足
- 客製化服務

#### 附加選項：

- 中央監控系統
- 氣體偵測器



## WTC-700 Wet-IH-Wet Scrubber

Model: WTC-700  
 Utility: 220V, 60Hz, 3φ4W, 100A  
 Capacity: 800LPM@800°C , 400LPM@1050°C  
 Working Temp: 740°C~1100°C  
 Dimension: 1250\*1100\*2160 mm(With Inlet bypass Valves)

### WTC-700 Application & DRE

NF3 >95%    SiH4 >99%    SiF4 >99%    HF >99% H2 >99%  
 NH3 >99%    B2H6 >99%    F2 >99%    O3 >99% Alexa>95%  
 TSA >99%    TMA>95%    TMS >99%    TDMAT>95% PDMAT>95%  
 TEOS >95%    TEMAZ >95%    ASM24>95%    NO2 >90%  
 Proposal Process : Semiconductor Thin Film 、 Etching 、 Diffusion

#### Advantage:

- Efficient Induction heating, Heating up quickly and energy saving
- Pre wet scrubber design, High Removal Efficiency
- Anti-corrosion material design, Longer product life expectancy
- Scraper for Reaction Chamber
- Low operation cost

#### Option:

- Inlet Anti-Backfire Device
- Gas Detector

#### 優勢:

- 高效加熱，升溫快速節能
- 前段水洗，增加除去效率
- 抗腐蝕材質，延長使用壽命
- 腔體刮刀
- 低操作成本

#### 選配:

- 入口防回火裝置
- 氣體偵測器



## WTC-800 Burn-Wet Scrubber

Model	WTC-800
Capacity	400LPM
Utility	220V, 50/60Hz, 3 φ 4W, 16A
Dimension	950(W)*950(D)*1900(H) mm

### WTC-800 Application & DRE:

H2 >99%	DCS >99%	GeH4 >99%	HCl >99%	SiH4 >99%
B2H6 >99%	CF4 >95%	TCS >99%	NH3 >99%	PH3 >99%
TEOS>99%	WF6>99%	HCl>99%	HF>99%	SF6>95%

#### Advantage:

- Burn wet scrubber design , High Removal Efficiency
- Anti-corrosion material design, Longer product life expectancy
- Blower with Inlet APC

#### Option:

- Inlet Anti-Backfire Device
- Chemical Dosing with pH Control
- Inlet Auto By-pass System

#### 優勢:

- 周延的安全考量,操作容易
- 高處理效率
- 低操作成本
- 零件供應充足
- 客製化服務

#### 附加選項:

- 中央監控系統
- 氣體偵測器



## WTC-1000 Wet-Scrubber

Model	WTC-1000
Utility	Power 220V, 50/60Hz, 3φ4W, 32A
Capacity	5000 CMH
Dimension	4100(W) x 1750 (D) x 2100(H) mm

**優勢：**

- 多段水洗設計，氣體處理效益佳
- 入出口 By Pass 功能
- 多段式 Chemicals Dosing pH 獨立控制



## WTC-2000 Hi-Gee Scrubber

Model	WTC-2000
Utility	Power 220V, 50/60Hz, 3φ4W, 100A
Capacity	1800 CMH
Dimension	3200(W) x 1250 (D) x 2250(H) mm

**優勢：**

- 利用旋轉填充床強化氣-液、液-液、氣-液-固相間傳質速率
- 傳質係數高
- 液體滯留量低
- 滯留時間短 (<1 s)
- 分離效率高
- 設備尺寸小
- 易操作與維修
- 節能效益高



# Cumulative installation performance

## 銷售實績

產業類別 Industry Category	國內 Domestic	海外 Overseas
半導體產業 Semiconductor Industry	> 2400 sets	> 300 sets
光電/磊晶 產業 Optoelectronics and Epitaxy Industry	> 30 sets	6 sets
大學/研究機構 Universities and Research Institutes	5 sets	2sets

## 研發專利



### System Software Development

W6致力於系統軟體創新與技術之開發，擁有系統整合軟體、電子商務、專案設計管理、Android與iOS等APP及網站Web應用軟體領域之完整自主開發。在專業軟體技術團隊全方位系統整合下，提供高效率高品質的與時俱進系統創新應用軟體服務，藉以提升合作夥伴們的新時代產品競爭力。

W6 is dedicated to innovation and development of System Software Technology, such as system integration, e-commerce, project management, self-developed apps for Android and iOS, web applications, etc.

Our team is comprised highly-skilled software professionals helping our clients to enhance competitiveness.



### 服務項目 Services

#### 客製化應用軟體開發 Development of Custom Application Software

- 行動Android / iOS APP應用製作 Development of Innovative mobile application for Android and iOS
- 電子商務 網路購物平台建置 E-Commerce Platform Development
- 網站Web應用軟體 企業入口網站 Website Application, Enterprise Information Portal
- 專案設計管理 Project Design & Management
- 系統整合軟體研發 System Integration Software Development

### 行動智慧廠務系統 Mobile IoT - Smart Facility Management System

『行動智慧廠務系統』提供企業最佳的『智慧工廠整合服務』一步到位，彈指間全面掌控。瞬息萬變的行動化戰略時代，立於智慧廠聯網不敗之地!

The "Mobile Intelligent Facility Management System" provides enterprises with the ultimate one-stop "Smart Factory Integration Service," offering total control at your fingertips. In this rapidly evolving era of mobile strategy, stay ahead of the curve with the Smart Factory IoT!



## IoT行動智慧廠務系統 IoT – Smart Facility Management System

### 智慧感測 Intelligent Sensor

可以偵測、識別、診斷和解決機台異常問題。

Detect, identify, diagnose, and solve abnormal machine problems.

### 設備聯網 Equipment Network

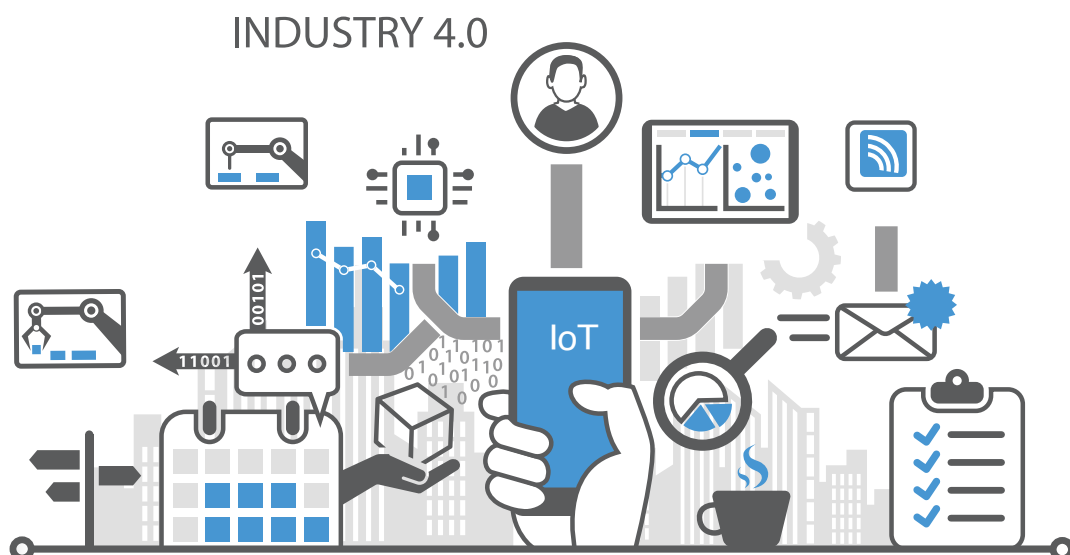
利用網路將高科技廠房的自動化機器、設備、電力等基礎架構、或單獨的管理系統…等串連在一起。

Enable high-tech industrial factories to connect various automation machines, equipment, electronic devices, and facility management systems, etc.

### 預測維修 Predictive Maintenance

通過應用學習提前知道機台的健康狀況，決定最佳的保養或維修時機。

Catch potential problems through connectivity and communication. Predictive maintenance occurs as needed.



## 智慧感測 Intelligent Sensor

### IR智慧巡檢系統 Smart Mobile Thermography Inspection System

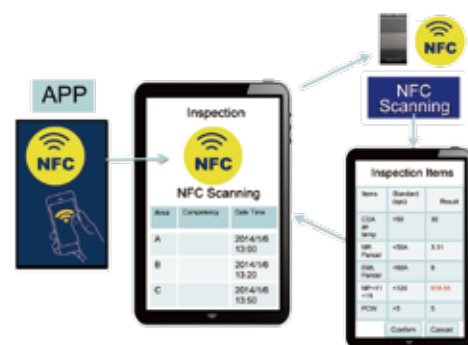
- 首創價值方案!節省人力，降低成本，提高效率
- IR檢測、儲存、傳輸、讀取，全功能一步到位
- 先進影像定位SOP，智慧判斷、自動警示
- The pioneering value solution for manpower saving, cost reduction, and efficiency improvement!
- Comprehensive functions in place within one step, such as IR inspection, storage, transfer, and reading.
- Advanced image positioning SOP, intelligent judgment, and auto alert.



## 設備聯網 Equipment Network

### NFC 智慧行動巡檢 Smart Daily Inspection

- 電子化智慧日常到位巡檢，取代傳統人工抄表紙本紀錄
- 防止異常，提高管理質量效率
- 移動裝置操作、即時故障排除、追蹤查詢
- 大數據圖表報表匯總，設備訊息統計分析
- 省時、省力、省工、省錢



- The NFC daily electronic inspection replaces the traditional manual paper recording of the meter.
- Abnormality prevention to enhance management quality and efficiency.
- Mobile device operation, real-time troubleshooting, and follow-up inquiry.
- Aggregation of the big data charts and reports as well as the equipment information statistics and analysis.
- Saving time, efforts, labor and money.

## 預測維修 Predictive Maintenance

### EPM智慧保修管理 Smart Mobile Thermography Inspection System

- 預防保養排程電子化管理、系統自動追蹤提醒
- 保修進度即時追蹤查看
- 零件庫存即時查詢追蹤
- 設備相關可即時查詢資訊
- 預防更換耗材和維護
- 文件保留避免資訊文件流失
- 即時翻閱操作手冊、查看歷史紀錄
- 分析資訊
- Electronic management of the preventive maintenance schedule, automatic system tracking reminder.
- Real-time follow up the progress of the maintenance.
- Real-time query and follow-up of the parts inventory.
- Real-time inquiry about the information related to the equipment.
- Preventive replacement of consumables and maintenance
- Preservation of documents to avoid the loss of documents.
- Real-time reading of the operation manual and checking of the historical records.
- Data analysis.



## IoT 智慧工廠解決方案 IoT Smart Factory Solution



## System Software Development BU

我們的團隊以用戶為中心的設計構建IoT智慧工廠應用系統。

User-Centered Design (UCD) to build IoT Smart Factory Application System

團隊具有專業經驗的開發人員，能夠在快速的時間內交付出色的應用程序。

Highly-skilled software professionals to develop and execute at such short notice.

我們能夠提供IoT智慧工廠應用解決方案，滿足客戶的需求與要求。

IoT smart factory application solutions to meet customer needs and requirements.

我們致力於開發更好的應用軟體，努力提供一流的服務與更直觀、更簡化的用戶體驗。

We are committed to developing better application software, striving to provide first-class service and a more intuitive, more simplified user experience.

■ PLANNING ■ REALIZATION ■ TESTING ■ DEPLOYMENT ■ MAINTENANCE



## Wet Process &amp; Chemical System

## 系統總覽

## 針對先進半導體製程需求的最佳化設計

漢科產品 WTCD-1000S 系列化學品供應系統專為高科技廠房廠務設計規劃，滿足製程端高潔淨度化學品分配到半導體和面板製程模組需求。

該系統提供獨立的泵浦輸送以提高運作效率。供應泵浦將化學品分配到使用端，同時設置過濾器確保潔淨度和自主循環迴路。儲存槽內化學原料透過桶裝包材分配與再循環模式將其輸送到指定容器或日用罐。

## System Overview

## Optimized Design for Advanced Semiconductor Manufacturing Purpose

The Wholetech WTCD-1000S Series Chemical Dispense System is designed for, and caters to high-end factories, which requires high quality distribution of process chemicals to semiconductor and panel process modules.

The system provides two independent pumping modules for operational efficiency. The primary pumping module distributes chemical to point-of-use, while providing necessary filtration and circulation back to the source. The drum module is used for transferring raw chemicals to the dispensing vessels or day tanks during preliminary transfer and recirculation mode.

## 特點：

- 機櫃隔間設計，以便在泵浦或過濾器維修期間不間斷地進行供應操作。
- 透過視窗進行檢測維護。
- 化學品採樣檢測裝置。
- 化學品供應脈衝減緩防止微粒子產生。
- 潔淨水槍與氮氣槍設計以進行泵浦和過濾器的維修更換。

## Features:

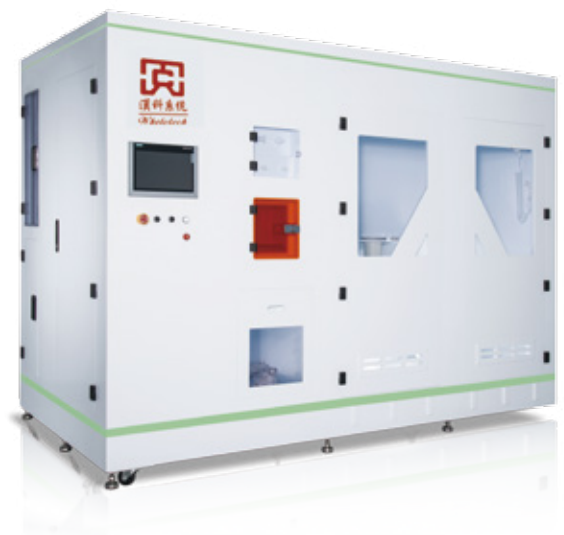
- Segregated compartments, for uninterrupted dispensing operation during pump or filter maintenance mode
- See through window for safety inspection
- Sampling in critical process lines
- Pulsation reduction in chemical supply for particle control
- DI/N2 maintenance services for pumps and filters

## 產品規格：

- 尺寸（長×寬×高）： 2.8m×1.5m×2m
- 電源： 100~220V，50/60Hz，300W
- 氣源： GN2/CDA 0.5~0.7 MPa
- 排風壓： 183 ~ 366 Pa
- 機櫃外構材質： PP材質
- 供應流量： 20-80 LPM
- SEMI-S2認證
- 有機溶劑類通過TS防爆認證

## Specification:

- Dimensions (L x W x H): 2.8m x 1.5m x 2 m
- Electric supply: 100 ~ 220V, 50/60Hz, 300W
- Gas supply: GN2/CDA 0.5 ~ 0.7 MPa
- Negative air pressure: 183 ~ 366 Pa
- Housing material: PP type
- Supply Flow Rate: 20-80 LPM
- SEMI-S2 certificate
- TS certificate for solvent type



## WTCD-1260S Cabinet Acid

WT	1	2	-	3	4	5	6	7	-	8	9
↓	↓	↓		↓	↓	↓	↓	↓		↓	↓
Company	Type	Function	PV Q'ty	Pump Q'ty	Filter Q'ty	Version	Standard	Year		Serial Number	
Wholetech	C : Chemical	B : Blending / Mixing									
	( Acid / Caustic / Oxide )	C : Coupling	0 : without PV	0 : without Pump	0 : without Filter	0 : 1st New	S : Standard	21 : 2021		01	
	S : Slovent	D : Distribution / Dispense S : Supply	1 : with PV * 1	1 : with Pump * 1	1 : with Filter * 1	1 : 2nd Revised-1	C : Customized	22 : 2022			
	L : Slurry	T : Transfer / Charge Ca : Cart V : VMB B : Box F : Filling R : Refilling	2 : with PV * 2	2 : with Pump * 2	2 : with Filter * 2	2 : 3rd Revised-2 ... 24 : with Filter * 24 9 : 10th Revised-9	R : Research	23 : 2023		...	

### Example

WT	S	TS	-	2	2	12	O	C	-	23	01	WTSTS-22120C-2301
Wholetech	Slovent	Charge & Supply	-	2 Pressure Vessel	2 Pumps	12 Filters	1 <sup>st</sup> Version	Customized Design	-	2023 Year	NO.1	22VC0001 EKC2100 Charge & Supply Unit

- 循環過濾，純化，供應化學品，提供最佳運轉
- 可調整參數混酸/稀釋系統，操作維護便利
- 設置取樣點檢測品質
- 化學品輸送可依操作需求選擇氮壓或泵浦模式
- 使用PLC人機介面（HMI）操作直覺方便
- 機櫃洩漏液感測回傳，維護系統安全運轉
- 顯示供酸狀態現況，流量感測回傳監控
- 設備通過SEMI-S2認證，TS防爆認證，安全可靠

- Recirculating filtration, purification, and chemical supply, providing optimal operation.
- Adjustable parameter mixed acid/dilution system, convenient operation and maintenance.
- Equipped with sampling points to inspect quality.
- Chemical transport can select nitrogen pressure or pump mode according to operational needs.
- Use PLC human-machine interface (HMI) for intuitive and convenient operation.
- Cabinet leakage liquid sensing feedback, maintaining safe system operation.
- Display current acid supply status, flow sensing feedback monitoring.
- Equipment passed SEMI-S2 certification and TS explosion-proof certification, safe and reliable.

### Chemical Application

H2SO4、HCL、H3PO4、HF、H2O2、NH4OH，etc.

#### 附加選項：

- 化學品過濾器外殼尺寸 10" 或 20"。
- 泵浦供給（Trebtor / Whiteknight / Levitronix）或壓力容器N2供應。
- 酸鹼類機櫃外構採PP材質耐腐蝕。
- 有機溶劑類採用不銹鋼外殼，不銹鋼管。
- 供應管線和閥件尺寸：1 1/4"、1"、3/4"

#### Options:

- Dispense filter housing 10", or 20"
- Pump supply (Trebtor/Whiteknight/ Levitronix ) or Pressurized Vessel supply.
- Polypropylene Cabinet for acids and causticsSS Enclosure for Solvent, SS tube
- Main line and valves size: 1 1/4", 1", 3/4"



標準化學品供應單元 - 200L桶裝(Drum)化學品供應

依不同酸鹼/有機類化學品，提供塑膠/SUS材質機殼及對應耐化性管路

- 泵浦輸送模式，不使用壓力容器，降低設備維護安全風險。
- 化學品循環過濾、純化及除泡，提供最佳化學品供應。
- 過濾壓力差監控即時回傳，排程更換濾心避免中斷供液。
- 設置化學品取樣點，即時提取檢測品質。
- 設置洩漏感知器，即時監控回傳SCADA。
- 內建PLC、HMI、Tower Lamp，安全操作、即時回傳SCADA。
- 全系列標配ISO 14644標準Clean Booth，避免換桶過程汙染系統。
- 有機類標配UV/IR、TH Sensor及CO2防護系統，安全可靠。
- 設備通過SEMI-S2認證，TS防爆認證，安全可靠。

※選配：流量感測監控。



Standard Chemical Supply Unit - 200L Drum Chemical Supply

Depending on the type of acid, alkali, or organic chemical, we offer plastic/SUS housings and corresponding chemical-resistant piping.

- Pump delivery mode eliminates the need for pressure vessels, reducing equipment maintenance safety risks.
- Chemical circulation filtration, purification, and defoaming provide optimal chemical supply.
- Real-time monitoring and feedback of filtration pressure differentials allow for scheduled filter replacements to avoid supply interruptions.
- Designated chemical sampling points enable immediate extraction and quality testing.
- Leakage sensors provide real-time monitoring and feedback to SCADA.
- Built-in PLC, HMI, and Tower Lamp ensure safe operation and real-time SCADA feedback.
- All models come standard with an ISO 14644 standard Clean Booth to prevent system contamination during container changing.
- Organic products come standard with UV/IR, TH sensors, and CO2 protection systems for safety and reliability.
- Equipment is SEMI-S2 certified and TS explosion-proof certified for safety and reliability.

Option :

Flow Sensing and Monitoring.



CDS&WCCS  
化學品供應系統&廢液回收系統

200+

Systems Delivered

台以上 (近三年累計)  
over the past 3 years  
(2022-2024)



VMB&T-BOX  
閥箱&分流箱

1,000+

Units Delivered

台以上 (近三年累計)  
over the past 3 years  
(2022-2024)



MARKET COVERAGE  
市場涵蓋

台灣·新加坡·香港·中國  
Taiwan · Singapore ·  
Hong Kong · China

提供國際級專業服務與支援

Delivering world-class  
service and support  
worldwide